



## SAN DIEGO BAY PARADE OF LIGHTS 2020

# SKIPPER'S INFO AND INSTRUCTIONS

PLEASE READ ALL THE ENCLOSED INFORMATION AND FOLLOW INSTRUCTIONS. WE WANT YOU TO HAVE A GOOD TIME AND THAT ALL THE SPECTATORS ENJOY SEEING ALL OF THE BOATS IN THE PARADE.

QUESTIONS? Email: [questions@SDParadeOfLights.org](mailto:questions@SDParadeOfLights.org).

***WE REALIZE THIS IS LONG, BUT WE ASK THAT YOU READ THE COMPLETE INSTRUCTIONS. IT SHOULD HAVE ALL THE ANSWERS YOU NEED.***

### PARADE TIMES

There are two parades. Participate in both for judging points.

- Sunday December 13 and Sunday December 20
- Staging Area(see included diagram): Arrive by 5:00 PM and 5:15 PM. Parade Underway at 5:30 P.M.
- Monitor VHF Channel 6 (Perimeter Control) for any announcements and welcome at 5:15 PM.

### BEFORE THE PARADE:

#### BOAT NUMBER:

1. Display forward on the port bow. Used for boat identification only.
2. Your parade boat number does not indicate your position in the parade.
3. Illuminate and call out number when passing the judges at the embarcadero and at the docks by Peohe's.
4. Be sure your number is visible on the port bow as you approach the Embarcadero and when you approach the docks at Peohe's restaurant.
5. **Judges must see the boat number in order to judged.**
6. Be sure your number is visible to the "Check Boat" near the pier at Cesar Chavez Park near Picket Boat Station 19.

## **USCG "SPECIAL LOCAL REGULATIONS":**

1. The Coast Guard designates parade route as a special marine event. A special local regulation has been issued. Refer to local Notice to Mariners for additional information.
2. Area of the parade route will be intermittently closed to all other vessel traffic.
3. Coast Guard is empowered to forbid and or control any vessel movement in regulated area.

## **SAFETY TIPS:**

1. All participants must strictly comply with Inland Rules of the Road.
2. Necessary navigation lighting requirements and safety precautions must be observed.
3. Portable Generators: Plan ahead for underway fueling to minimize hazards.
4. Coast Guard has final decision on cancellation due to weather.
5. Go slow (approximately 5 knots) to minimize wake causing lights to come down and small boats to swamp.
6. Stay in parade line, and maintain your distance.
7. Don't leave parade early. The boat behind follows you!
8. Stay as close to shore as safety permits (remember anchorage off Shelter Island).

## **9. Don't drink. The designated skipper shall refrain from consuming alcohol.**

## **ON THE WATER PRIOR TO THE START OF THE PARADE:**

### **STAGING AREA:**

1. The staging area is southwest of buoy SD 17 outside of the main channel a diagram is included.
2. Arrive between 5:00 PM and 5:15 PM. Monitor VHF Channel 6 for parade information.
3. There is no line-up assignment. **A lead boat will be assigned by the committee boat at the start line.** Monitor VHF Channel 6 for the announcement. You do not have to check-in with the committee boat at the start.
4. The Starting Line is between buoy 17 and the committee boat with the flashing yellow light.
5. Please, do not start prior to 5:30 PM. Follow the assigned lead boat across the start line.

### **STARTING THE PARADE:**

1. Join a loose formation from the southwest end of the Starting Line in one straight line.
2. Stay south of a line between buoy 17 and the committee boat on station.
3. Don't crowd in at the beginning of the parade. Wait your turn.
4. Boats over 70' fall in near the end of the parade.
5. ALL SAILBOATS MUST BE UNDER POWER.

6. Kayaks and outriggers (boats powered by hand) should attempt to start early and if unable to maintain the parade speed, let the boats under power pass.

**OFFICIAL PATROL VESSELS:**

1. Provided by U.S. Coast Guard, U. S. Coast Guard Auxiliary and Harbor Police.
2. USCG and Harbor Police vessels display flashing blue beacons.
3. USCG Auxiliary vessels display red and yellow flashing lights.
4. Patrol vessels assist in maintaining the safety of the event.
5. Failure to obey instructions of any patrol vessel can be cause for disqualification.

**COMMITTEE BOATS:**

1. Committee boats display yellow flashing lights and a large committee signs.
2. Positioned around parade route to indicate route direction.
3. **Parade route is between the committee boat and the shore.**

**RADIO COMMUNICATIONS:**

1. IMPORTANT PARADE BRIEFING by Perimeter Control - VHF Channel 6 at 5:15 P.M. before start - FOR ALL PARTICIPANTS.
2. Monitor VHF Channel 6 during the parade and follow instructions.
3. DO NOT TRANSMIT unless you have an emergency. (Call Ch. 6 and switch to Ch. 16).

**DISABLED VESSELS/EMERGENCIES:**

1. Patrol vessels will monitor Channel 16 and respond in the event of an emergency.
2. The parade fleet will be kept informed on Channel 6.
3. If you have a problem and must leave the parade, turn off your decorating lights and pull out of parade line.
4. If decorating lights fail, pull out of parade line. Re-enter when fixed.
5. SeaTow will provide free service to parade participants who are experiencing problems. Contact SeaTow on VHF 16.

**THE PARADE ROUTE:** (Also see attached Parade Route chart).

1. Start Time: 5: 30 P.M.
2. The Starting Line is between the Start Committee Boat and buoy 17.
3. West end to east end of Shelter Island.
4. East end Shelter Island across America's Cup Harbor entrance to west end Harbor Island
5. West end Harbor Island to east end of Harbor Island.
6. East end Harbor Island to the Embarcadero north of Maritime Museum's ferry "Berkeley".
7. Stay between the Committee Boats and shore. If mega-yachts are med-tied at the Embarcadero, the parade will not enter that area. ( See the alternate route on the chart.)

8. Pass First Judge Location on a Maritime Museum boat. (Participants illuminate boat number for judges)
9. Move back to Embarcadero to Pass by the "Star of India".
10. Move back to a point outside the pier.
11. Parallel the Embarcadero to a point off the bow of the Midway.
12. Pass Seaport Village and the San Diego Marriott Hotel and Marina Park.
13. Continue past the 10th Street Terminal building.
14. **Do not cross the bay until** you have passed the committee boat located off the pier at Cesar Chavez Park. Display your parade number to the check point boat at this point. This is required to insure qualification for being judged.
15. Cross the bay to the Marriott Coronado Hotel. See the enclosed diagram.
16. Avoid non-parade traffic using main channel when crossing from the San Diego to Coronado side of San Diego Bay.
17. Proceed northwest to pass the second Judges Location on the docks at the restaurant Peohe's. (Participants illuminate boat number for judges).
18. Pass the docks at Peohe's and the Ferry Landing.
19. Stay on channel side of unlit nun buoy 22A and Committee Boat in that location to avoid shoal. This is the Finish.

**UPON PARADE COMPLETION:**

1. Turn off your decoration lights. Maintain your navigational running lights.
2. Yield to boats still in parade
3. Do not cross through parade on way home

There are significant changes for the 2020 parade due to the covid 19. The loss of the funding from the Port and the physical distancing requirement, afford that there will be no "Awards Dinner."

**JUDGING:**

1. There are two groups of judges.
2. First Set of Judges:
  - On board a boat at the Maritime Museum.
3. Second Set of Judges:
  - On the docks at the restaurant Peohe's.
4. **YOU MUST BE JUDGED BY BOTH GROUPS OF JUDGES TO BE ELIGIBLE FOR AN AWARD. YOU MUST ALSO BE SEEN BY THE BOAT CHECKING ATTENDANCE AT THE PIER BY CHAVEZ PARK.**
5. Boats will lose points if parade route not followed (no water donuts, etc.)
6. Boats that enter both nights will receive a bonus point.

**LIGHT PARADE AWARDS:**

Boats will be judged on originality and the creative use of decorations depicting the parade theme. Boats are judged in four categories with scores ranging from 1 to 5 for each category.

**Boats are Judged in the following 4 categories:**

Lights,

- Holiday Lighting
- Amount of Lighting
- Creative use of Lighting
- Difficulty of Lighting (i.e., small boat with incredible lighting effects)

Holiday Music,

- Music
- Audibility
- Live or Recorded
- Applicable to the parade theme

Special Effects,

- Special Effects, entertaining and unusual animation and or lighting
- Crowd Engagement

Theme

- Boat decorations and crew adherence to the theme, this years theme “The Twelve Days of Christmas.”
- Dressed in costume/boaters participation
- Use of ornamentation other than lighting
- Originality
- More than just lighting
- Adaptation and variation of theme

Trophies will be awarded as follows:

- Best of Parade. "Star of India" Perpetual Cup
- Best of Power 46 ft and over
- Best of Power 33 - 45 ft
- Best of Power 32 ft and under
- Best of Sail 46 ft and over
- Best of Sail 33 - 45 ft and over
- Best of Sail 32 ft and under
- Best Self-Powered Vessel

**Winners will be contacted by either phone or email. Trophy's will be mailed to the winners.**

**PARTICIPATION PLAQUE:**

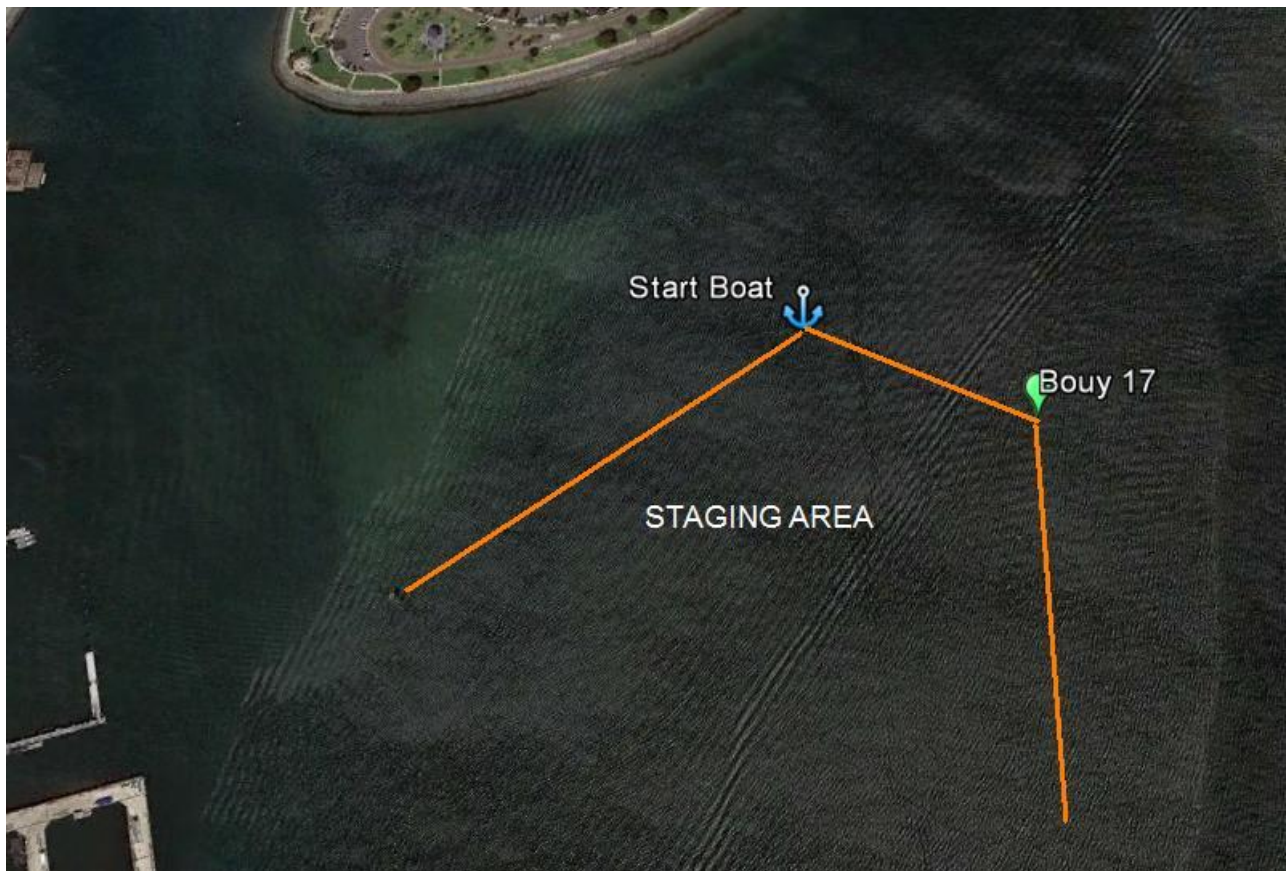
All participants will receive a participant plaque via mail..

**THANK YOU FOR YOUR PARTICIPATION IN THIS SIGNATURE HOLIDAY EVENT.**

# PARADE ROUTE



# PARADE STAGING AREA



# CROSSING THE BAY

