



## **SAN DIEGO BAY PARADE OF LIGHTS 2025 SUNDAY, DECEMBER 14 AND 21 SKIPPER'S INFO AND INSTRUCTIONS**

PLEASE READ ALL THE ENCLOSED INFORMATION AND FOLLOW INSTRUCTIONS.  
WE WANT YOU TO HAVE A GOOD TIME AND THAT ALL THE SPECTATORS ENJOY  
SEEING ALL OF THE BOATS IN THE PARADE.

### **PARADE TIMES**

There are two parades. Participate in both for bonus judging points.

- Sunday December 14 and Sunday December 21
- Staging Area (see included diagram): Arrive by 5:00 PM and 5:15 PM. Parade Underway at 5:30 P.M.
- Monitor VHF Channel 6 (Perimeter Control) for any announcements and welcome at 5:15 PM.

### **BOAT NUMBER:**

1. Display forward on the port bow. It does not indicate your parade position. **Be sure your number is not upside down.**
2. Illuminate and call out number when passing the judges at the Embarcadero (on the Berkely), Caesar Chavez Pier and at the beach area just off to the left of the Il Fornaio Restaurant.

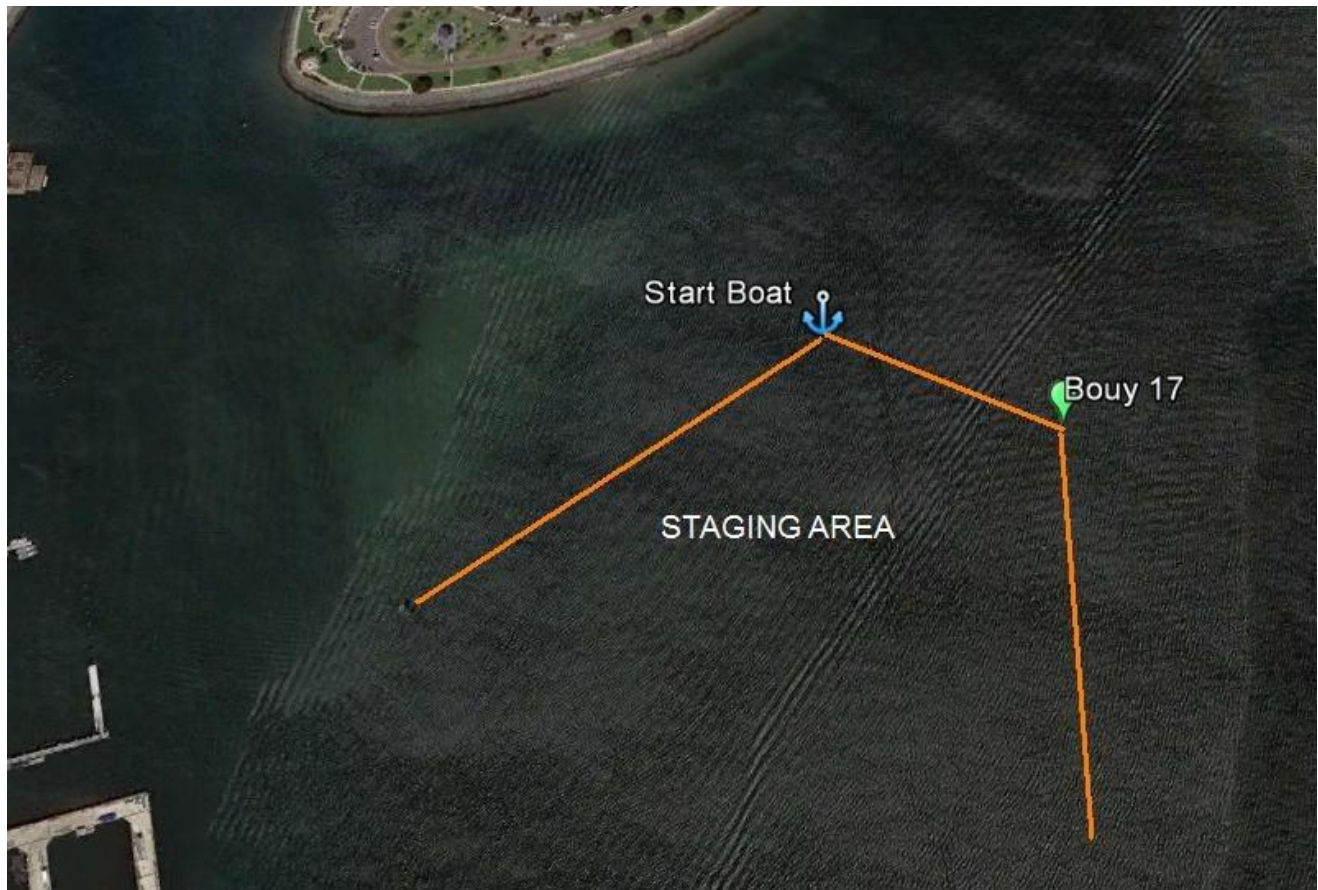
### **SAFETY TIPS:**

1. All participants must strictly comply with Inland Rules of the Road.
2. Portable Generators: Plan ahead for underway fueling to minimize hazards.
3. Avoid maneuvers that cause wake causing lights to come down and small boats to swamp and to reduce long gaps in the parade. A wake causing would be a donut for example.
4. Stay in parade line, and maintain your distance.
5. Unless it is an emergency, please don't leave parade early.
6. Stay as close to shore as safety permits (remember anchorage off Shelter Island) leaving each Perimeter boat to starboard.

### **STAGING AREA/STARTING THE PARADE:**

1. The staging area is southwest of buoy SD 17 outside of the main channel. See the diagram

below:



2. Arrive between 5:00 PM and 5:15 PM. Monitor VHF Channel 6 for parade information at 5:15 PM. The Starting Line is between buoy 17 and the start boat with the flashing yellow light
3. There is no line-up assignment. Please, do not start prior to 5:30 PM. Follow the assigned lead boat across the start line. **A lead boat will be assigned by the committee boat at the start line.** **Do not start before the lead boat crosses the start line.** You do not have to check-in with the committee boat at the start.
4. Please do not start prior to 5:30 PM. **Join a loose formation from the southwest end of the Starting Line in one straight line behind the lead boat (TBD).**
5. Kayaks and outriggers (boats powered by hand) should attempt to start early and if unable to maintain the parade speed, let the boats under power pass.

#### **OFFICIAL PATROL VESSELS:**

1. Provided by U.S. Coast Guard, U. S. Coast Guard Auxiliary and Harbor Police.
2. USCG and Harbor Police vessels display flashing blue beacons.
3. USCG Auxiliary vessels display red and yellow flashing lights.
4. Patrol vessels assist in maintaining the safety of the event.
5. Failure to obey instructions of any patrol vessel can be cause for disqualification.

#### **OFFICIAL VESSELS (PERIMETER) BOATS:**

1. Perimeter boats display amber flashing lights and a large committee sign.
2. Positioned around parade route to indicate route direction. Leave Perimeter boats along the parade route to your starboard.

## RADIO COMMUNICATIONS:

1. Monitor VHF Channel 6 during the parade and follow instructions.
2. DO NOT TRANSMIT unless you have an emergency. (Call Ch. 6 and switch to Ch. 16).

## DISABLED VESSELS/EMERGENCIES:

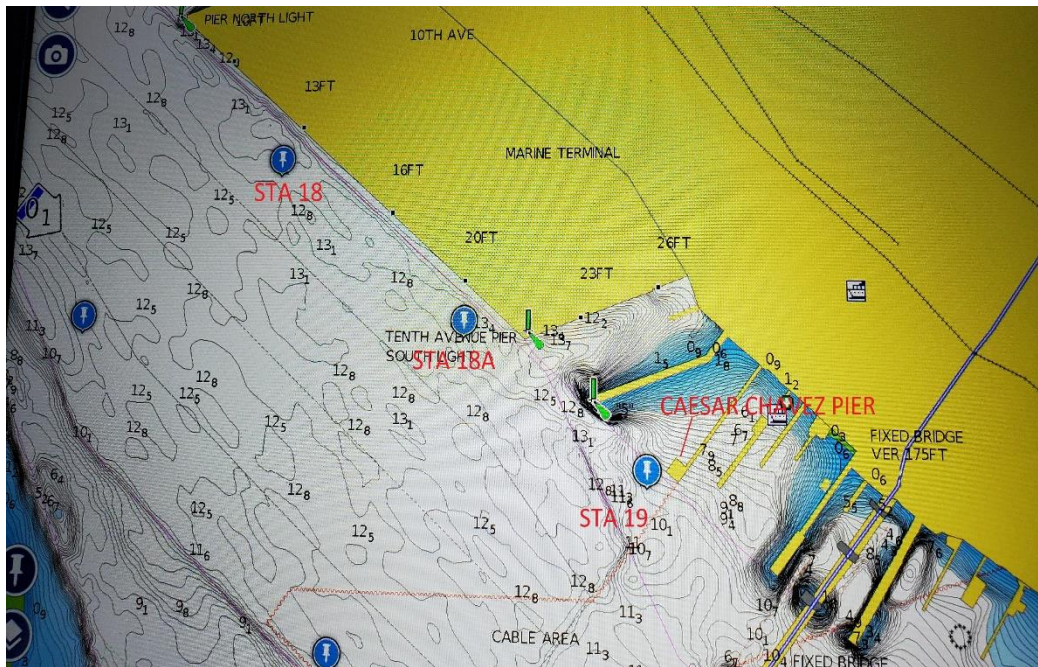
1. Patrol vessels will monitor Channel 16 and respond in the event of an emergency.
2. The parade fleet will be kept informed on Channel 6.
3. If you have a problem and must leave the parade, turn off your decorating lights and pull out of parade line.
4. If decorating lights fail, pull out of parade line. Re-enter when fixed.

## THE PARADE ROUTE:

1. See the picture below:



2. The Starting Line is between the Start Committee Boat and buoy 17.
3. West end to east end of Shelter Island.
4. East end Shelter Island across America's Cup Harbor entrance to west end Harbor Island
5. West end Harbor Island to east end of Harbor Island.
6. East end of Harbor Island to the Embarcadero north of Maritime Museum's ferry "Berkeley".
7. **Pass the first judging station on a Maritime Museum boat. Remember to illuminate boat numbers and shout out your number.**
8. Move back into Embarcadero to pass by the "Star of India".
9. Move back to a point outside the pier.
10. Parallel the Embarcadero to a point off the bow of the Midway.
11. Pass Seaport Village and the San Diego Marriott Hotel and Marina Park.
12. Continue past the 10th Street Terminal building.
13. **Do not cross the bay until you have passed the second judging station and committee boat located at Perimeter boat station 19 off of the pier at Cesar Chavez Park. Dip into basin on the north side of the pier and exit port side to the judging station leaving the perimeter boat at station 19 to your starboard. Remember to illuminate boat numbers and shout out your number. See picture below:**



14. Cross the bay to the Marriott Coronado Hotel. See the enclosed diagram.



15. Avoid non-parade traffic using the main channel when crossing from the San Diego to Coronado side of San Diego Bay.
16. **Proceed northwest to pass the third Judging station on the beach area just off to the left of the Il Fornaio Restaurant. Remember to illuminate boat numbers and shout out your number.**
17. Pass the docks at Peohe's and the Ferry Landing.
18. Stay on channel side of unlit nun buoy 22A and Perimeter boat in that location to avoid shoal. This is the finish.

#### UPON PARADE COMPLETION:

1. Turn off your decoration lights. Maintain your navigational running lights.

2. Yield to boats still in parade
3. Do not cross through parade on way home

### **JUDGING:**

1. **YOU MUST BE JUDGED BY ALL THREE GROUPS OF JUDGES TO BE ELIGIBLE FOR AN AWARD and THE GRAND PRIZE.**
2. Boats will lose points if parade route not followed (no water donuts, etc.)
3. Boats that enter both nights will receive a bonus point.

### **LIGHT PARADE AWARDS:**

Boats will be judged on originality and the creative use of decorations depicting the parade theme. Boats are judged in four categories (Lights, Holiday Music, Special Effects & Themes) with scores ranging from 1 to 5 for each category:

#### **Lights,**

- Holiday Lighting
- Amount of Lighting
- Creative use of Lighting
- Difficulty of Lighting (i.e., small boat with incredible lighting effects)

#### **Holiday Music,**

- Music
- Audibility
- Live or Recorded
- Applicable to the parade theme

#### **Special Effects,**

- Special Effects, entertaining and unusual animation and or lighting
- Crowd Engagement

#### **Theme**

- Boat decorations and crew adherence to the theme, this year's theme **is AN OUT OF THIS WORLD CHRISTMAS.**
- Dressed in costume/boater's participation
- Use of ornamentation other than lighting
- Originality
- More than just lighting
- Adaptation and variation of theme

Awards will be awarded as follows:

- Best of Parade. "Star of India" Perpetual Cup
- Best of Power 46 ft and over
- Best of Power 33 - 45 ft
- Best of Power 32 ft and under
- Best of Sail 46 ft and over
- Best of Sail 33 - 45 ft and over
- Best of Sail 32 ft and under
- Best Self-Powered Vessel

**Winners will be contacted by either phone or email.**

**THANK YOU FOR YOUR PARTICIPATION IN THIS SIGNATURE HOLIDAY EVENT.**